

# FOR LEASE

25,000 SQ. FT.

Base Lease Rate \$14.00 per sq. ft. Triple Net



1868 GLEN DRIVE, VANCOUVER, B.C.

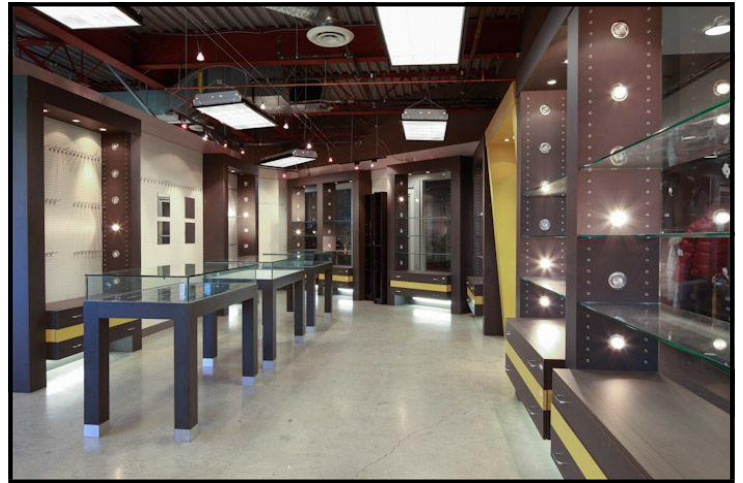


FOR FURTHER INFORMATION PLEASE CONTACT  
STEVE HALL OR BRADEN HALL / RE/MAX CREST  
steve@davieshall.ca \* (604) 718-7317  
braden@davieshall.ca \* (604) 718-7302  
www.davieshall.ca \* www.thegx.ca



# THE GX

## 1868 GLEN DRIVE, VANCOUVER, B.C.



The GX is located in the Vancouver downtown core and is home to nearly 60 showrooms, which represent more than 500 lines. Combining fashion, gift and accessory items under one roof, the GX is a convenient, one-stop destination for retail buyers.

The GX has recently undergone extensive renovations and rebranding which has made it one of the most sought after locations for fashion and fashion related showrooms, and sales agents in Western Canada. Some of the great attributes to the Building are:

- Free parking
- New retailers' lounge with free WIFI & music
- Some suites with freshly painted walls & new flooring
- Professional property management services
- Newly renovated common areas & lobby
- Showcase display at front entrance

With professional marketing assistance, the GX and its tenants are being promoted as follows:

- On-line advertising on [www.cut&show.ca](http://www.cut&show.ca).
- Website [www.thegx.ca](http://www.thegx.ca) promoting Tenants and their brands. There are regular blog entries to welcome new tenants and to announce new brands for existing tenants, as well as announcements for sample sales and special events.
- Planned printed advertising during national and major trade shows to increase retailers' awareness of the GX.

**The Management Team of "The GX" is dedicated to supporting and promoting your business!**

<b>Available spaces:</b>	398 sq. ft. - 1,000 sq. ft.
<b>Lease Rates:</b>	Starting from \$14.00 per sq. ft. - with 1-month of free basic rent for each rental year
<b>Operating Costs &amp; Taxes:</b>	\$11.61 per sq. ft. (2020)



**FOR FURTHER INFORMATION PLEASE CONTACT**  
**STEVE HALL OR BRADEN HALL / RE/MAX CREST**  
steve@davieshall.ca \* (604) 718-7317  
braden@davieshall.ca \* (604) 718-7302  
www.davieshall.ca \* www.thegx.ca





## FOR LEASE

1868 GLEN DRIVE, VANCOUVER, B.C.

UNIT	USEABLE AREA	RENTABLE AREA	LEASE RATE PER MONTH	OPERATING EXPENSES PER MONTH (2020)	TOTAL PER MONTH PLUS G.S.T.	AVAILABLE
101	960 sq. ft.	1,164 sq. ft.	\$1,358.00	\$1,126.17	\$2,484.17	Immediately
111	500 sq. ft.	606 sq. ft.	\$707.00	\$586.30	\$1,293.30	May 1, 2020
112	380 sq. ft.	461 sq. ft.	\$537.83	\$446.02	\$983.85	May 1, 2020
123	480 sq. ft.	580 sq. ft.	\$676.67	\$561.15	\$1,237.82	Immediately
127	549 sq. ft.	665 sq. ft.	\$775.83	\$643.39	\$1,419.22	May 1, 2020
128	451 sq. ft.	547 sq. ft.	\$638.17	\$529.22	\$1,167.39	May 1, 2020
148	950 sq. ft.	1,151 sq. ft.	\$1,342.83	\$1,113.59	\$2,456.42	Immediately
206	911 sq. ft.	1,104 sq. ft.	\$1,288.00	\$1,068.12	\$2,356.12	Immediately
212	427 sq. ft.	517 sq. ft.	\$603.17	\$500.20	\$1,103.37	May 1, 2020
214	280 sq. ft.	339 sq. ft.	\$395.50	\$327.98	\$723.48	Immediately
219	267 sq. ft.	324 sq. ft.	\$378.00	\$313.47	\$691.47	Immediately
221	467 sq. ft.	566 sq. ft.	\$660.33	\$547.60	\$1,207.93	Immediately
222	475 sq. ft.	576 sq. ft.	\$672.00	\$557.28	\$1,229.28	Immediately
224	501 sq. ft.	607 sq. ft.	\$708.17	\$587.27	\$1,295.44	Immediately
226	640 sq. ft.	776 sq. ft.	\$905.33	\$750.78	\$1,656.11	Immediately
233	417 sq. ft.	506 sq. ft.	\$590.33	\$489.56	\$1,079.89	Immediately
234	726 sq. ft.	880 sq. ft.	\$1,026.67	\$851.40	\$1,878.07	Immediately
235	518 sq. ft.	628 sq. ft.	\$732.67	\$607.59	\$1,340.26	Immediately
239	599 sq. ft.	726 sq. ft.	\$847.00	\$702.41	\$1,549.41	May 1, 2020
252	584 sq. ft.	708 sq. ft.	\$826.00	\$684.99	\$1,510.99	May 1, 2020
254	581 sq. ft.	704 sq. ft.	\$821.33	\$681.12	\$1,502.45	May 1, 2020



**FOR FURTHER INFORMATION PLEASE CONTACT**  
**STEVE HALL OR BRADEN HALL / RE/MAX CREST**  
 steve@davieshall.ca \* (604) 718-7317  
 braden@davieshall.ca \* (604) 718-7302  
 www.davieshall.ca \* www.thegx.ca

