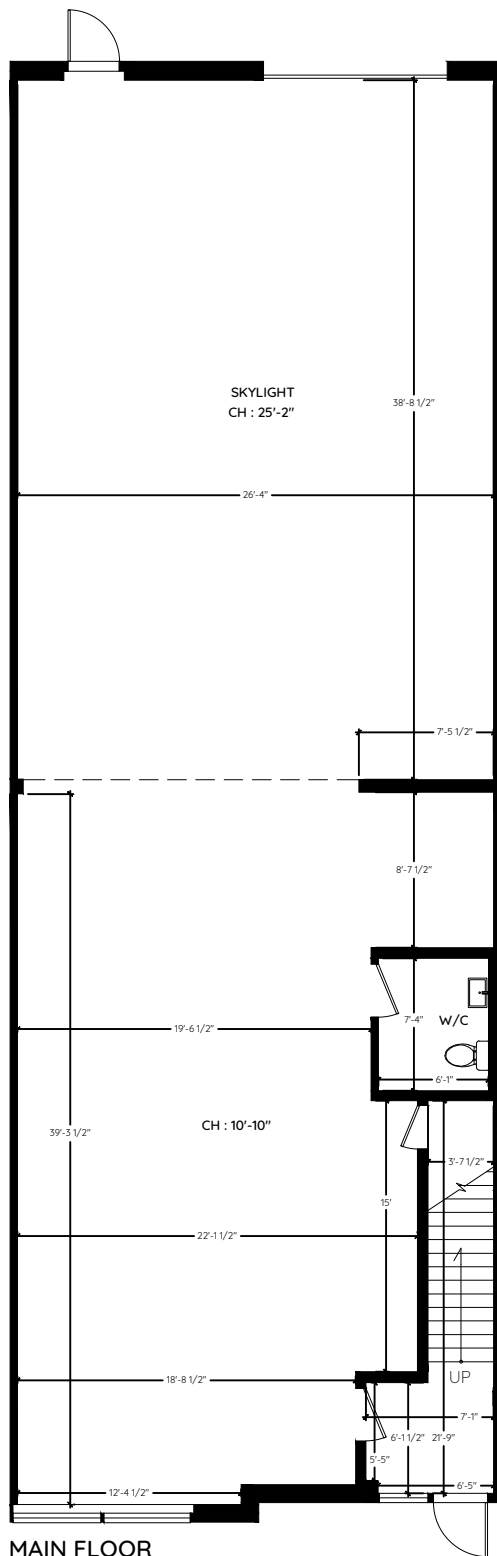


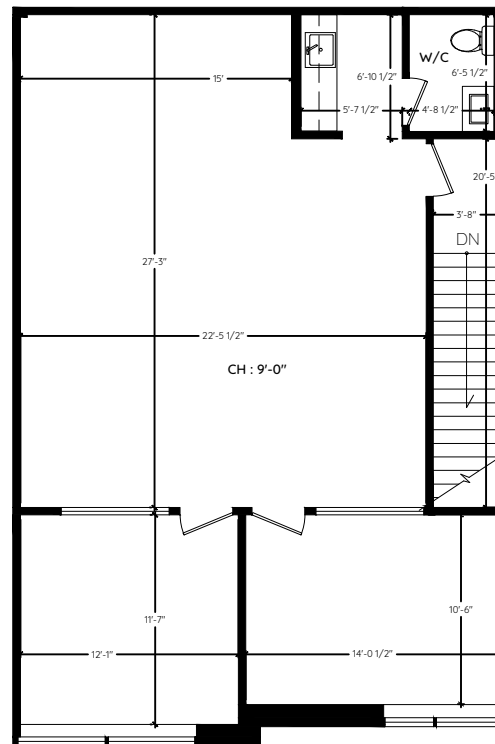
2115 - 950 SEABORNE AVENUE

PORT COQUITLAM, BC

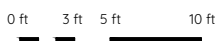
MAIN	2,181 SQ.FT.
UPPER	1,102 SQ.FT.
TOTAL	3,283 SQ.FT.



MAIN FLOOR
2,181 SQ.FT.



UPPER FLOOR
1,102 SQ.FT.



The floor plan and the measurements are approximate and are to be used for advertising usage only.
Not suitable for architectural or construction. E&O Insured